



SEC / SoftTouch System Setup Guide

This document is intended as a quick reference guide. It does not provide full documentation for all of the steps required to install and operate your system. Please contact SoftTouch for all questions regarding their software setup and operation. SEC software comes with complete Online Help which can be viewed and/or printed.

TABLE OF CONTENTS

- 1. ROD Gold Software Installation**
- 2. Initial System Setup**
- 3. Network Printer and SoftTouch Software Setting**
- 4. Assign printer groups to items in SoftTouch**
- 5. Configuring and loading the ROD Gold software**

1. ROD Gold Software Installation

The **Remote Order Display** software, otherwise known as ROD Gold, is a server based windows software suite that provides all of the features and functionality of a high level graphical kitchen display system.

The ROD Gold software can be installed on the in store server or on one of the POS workstations that is properly configured with a unique IP address and connected to the network. The latest version of the ROD Gold software can be downloaded freely from the SEC website:

<http://www.selectelectronics.com>

Software enhancements are provided on our website periodically and can also be downloaded freely at any time to obtain the latest and greatest features. The ROD Gold comes with complete online help for initializing and configuring your system so we will not go into detail in this document.

2. Initial System Setup

Orders entered via the SoftTouch POS system are sent to the kitchen display system through standard Windows network printers which need to be setup on your Windows based PC's and within the SoftTouch software. The ROD Gold software will receive the order data passed along on the network as if it were a network printer. The data will then be processed by the ROD Gold and sent out to the remote kitchen devices.

In order to configure a system from start to finish the following steps are required:

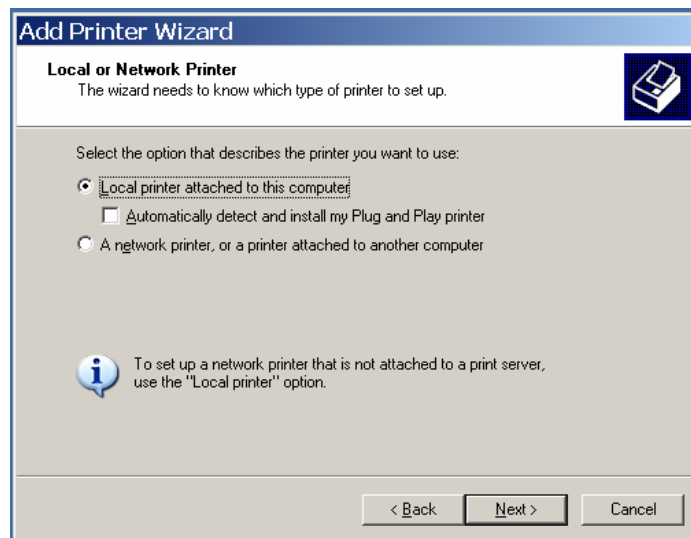
- a. Add Windows network printers as required at each POS terminal
- b. Add KDS templates to SoftTouch POS
- c. Add SoftTouch POS print codes
- d. Setup SoftTouch kitchen printers
- e. Setup printer groups within SoftTouch
- f. Install and configure the ROD Gold software

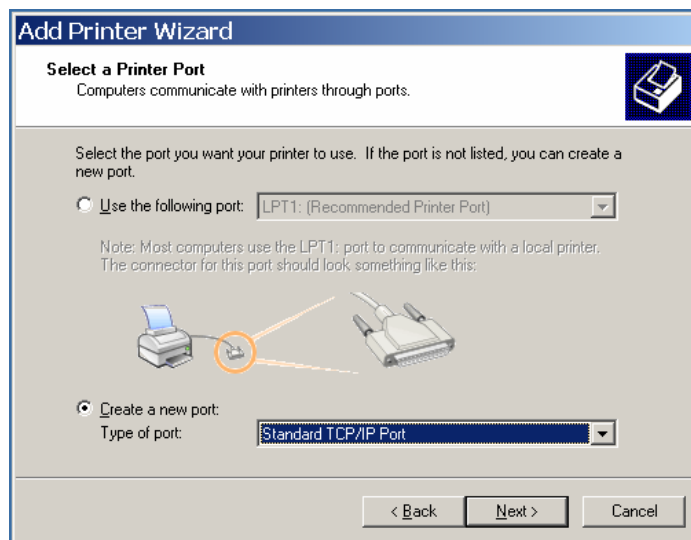
3. Network Printer and SoftTouch Software Setting

a. Add Windows TCP/IP printers at each POS terminals

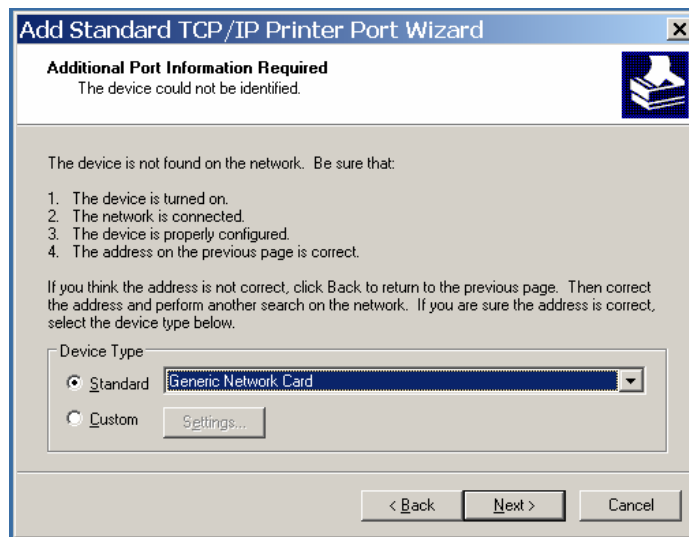
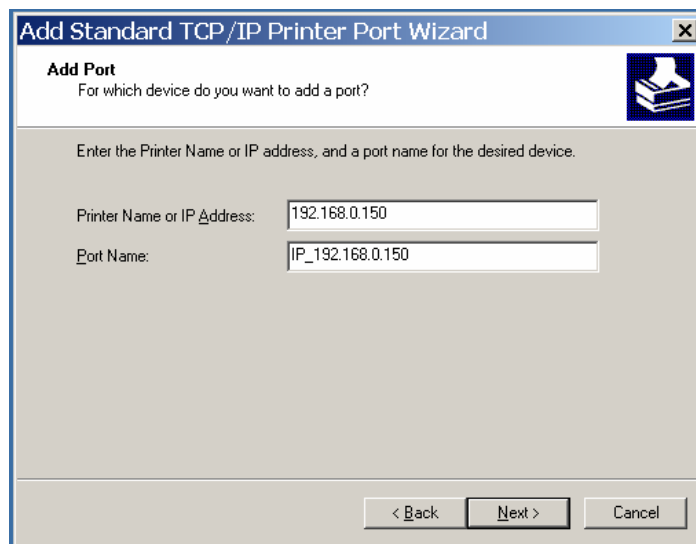
At each SoftTouch POS workstation add a TCP/IP printer for each intended kitchen display. For example, if there is going to be 3 displays in the kitchen, add 3 TCP/IP printers on every SoftTouch POS workstation.

Please note that the IP address assigned to each of the TCP/IP printers must be the same as the IP address of the computer that the ROD Gold software will be running on. Remember, the ROD Gold software will now be receiving the print data.

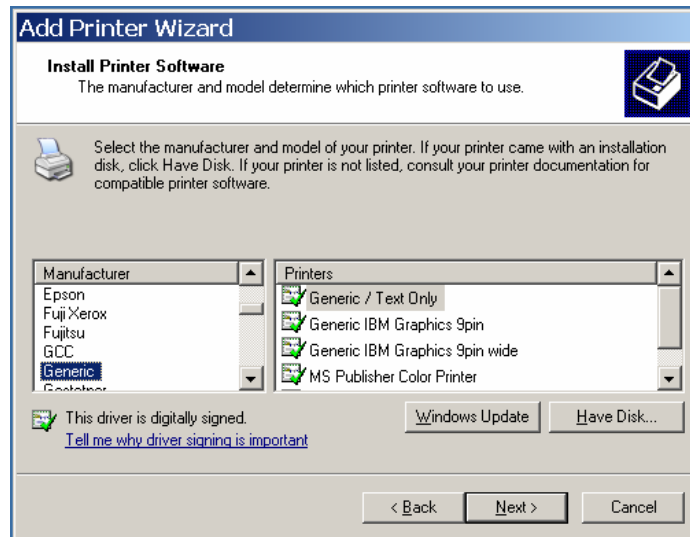




In the IP address field enter the IP address of the computer where the ROD Gold software is installed. The Port Name field will be filled in automatically and should be left alone.



Select the **“Generic”** manufacturer and **“Generic/Text Only”** driver.




You will be required to name the network printers you configure as “WKDS1”, “WKDS2”, “WKDS3”.....etc. This is required so that the ROD Gold software can properly identify the print jobs and send them to their intended video. **Do not use other names.**

For example, orders printed to WKDS1 will be displayed at video #1 as configured in the ROD Gold Maintenance. Orders printed to WKDS2 will be displayed at video #2.

Add Printer Wizard

Name Your Printer
You must assign a name to this printer.



Type a name for this printer. Because some programs do not support printer and server name combinations of more than 31 characters, it is best to keep the name as short as possible.

Printer name:


Do you want to use this printer as the default printer?

Yes
 No

< Back Next > Cancel

Add Printer Wizard

Printer Sharing
You can share this printer with other network users.




If you want to share this printer, you must provide a share name. You can use the suggested name or type a new one. The share name will be visible to other network users.

Do not share this printer
 Share name:

< Back Next > Cancel

Add Printer Wizard

Print Test Page
To confirm that the printer is installed properly, you can print a test page.

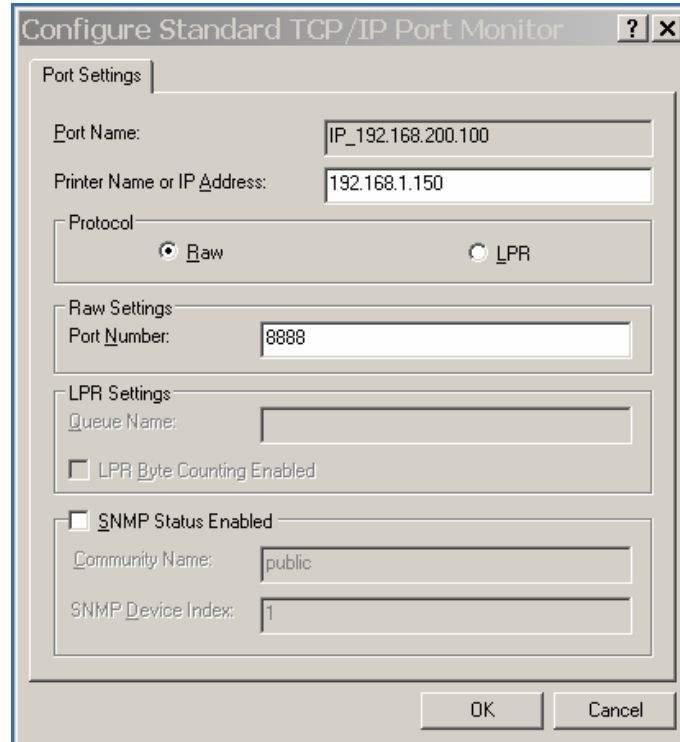


Do you want to print a test page?

Yes
 No

< Back Next > Cancel

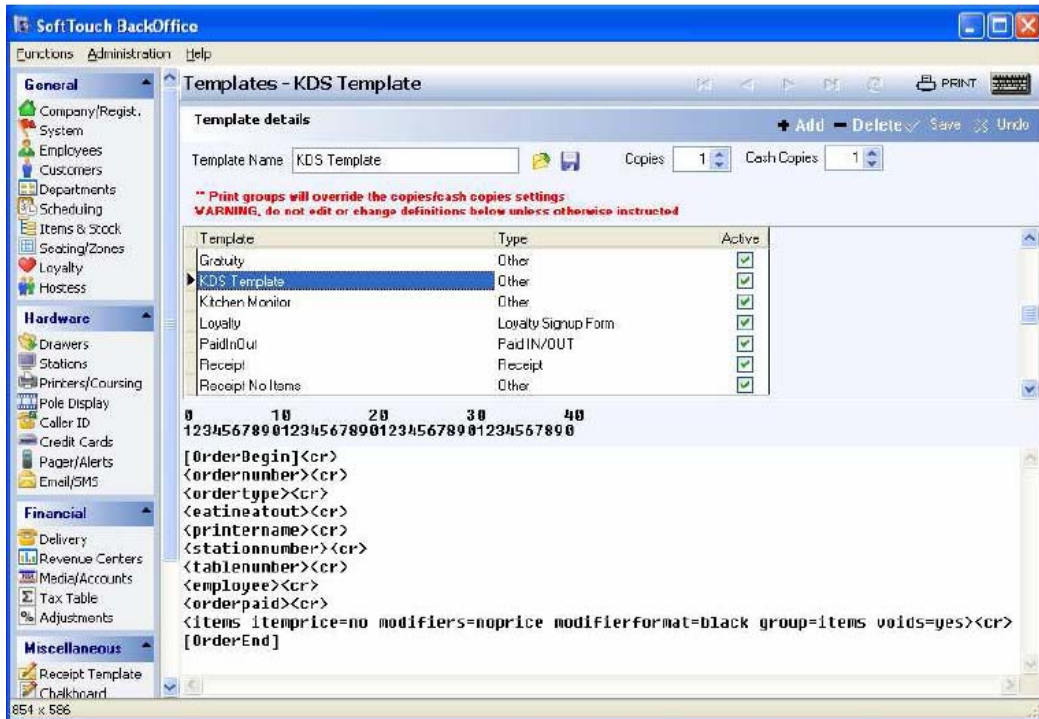
Now that you have a new printer installed you will have to assign a port number to it. This is the port address that the ROD Gold software will be receiving data on. Currently this port is fixed at “8888”. To do this right click on the name of the printer in the printer list. On the pop-up menu, click Properties and go to “Ports” tab. Highlight the printer entry, and click the “Configure Port” button. Set the “Port Number” value to “8888”.



b. Add KDS template in SoftTouch POS

Within the SoftTouch software a printing template is required to specify the output format the SoftTouch system will use when sending data to the kitchen displays. In order to configure this template open the SoftTouch Backoffice program with administrator rights. Go to the menu Administration -> Template Screen and create a customized KDS template **exactly** as the one below and name it “KDS Template”

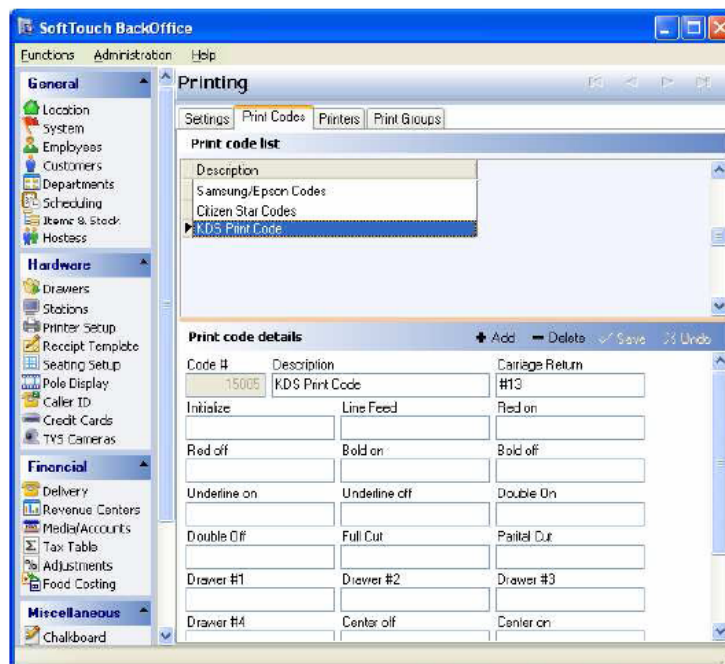
```
[OrderBegin]<cr>
<ordernumber><cr>
<ordertype><cr>
<eatineatout><cr>
<printername><cr>
<station><cr>
<tablenumber><cr>
<employee><cr>
<orderpaid><cr>
<items itemprice=no modifiers=noprice modifierformat=black group=items voids=yes coursing=no><cr>
[OrderEnd]
```



c. Add print code

Within the SoftTouch BackOffice, click “Printer Setup” on the left pane. Then on the right pane with the heading “Printing”, select “Print Codes” tab.

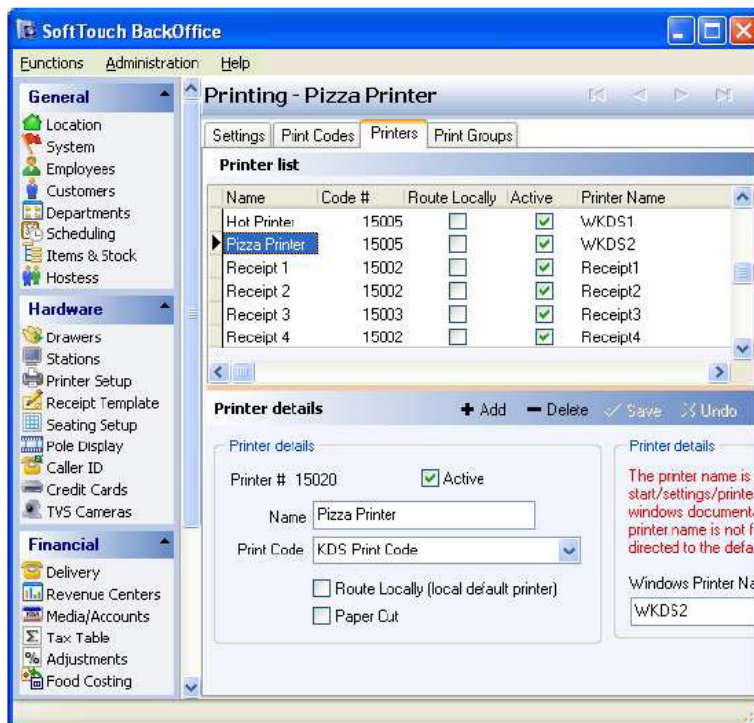
- i. Create a new KDS print code by clicking “+Add”.
- ii. Enter “KDS Print Code” in the “Description” box.
- iii. Enter “#13” in the “Carriage Return” box. All other boxes should be left blank.
- iv. Click the “Save” or checkmark to save your new settings.



d. Setup SoftTouch kitchen printers

Within the SoftTouch BackOffice, click “Printer Setup” on the left panel and on the right pane with the heading “Printing” select the “Printers” tab.

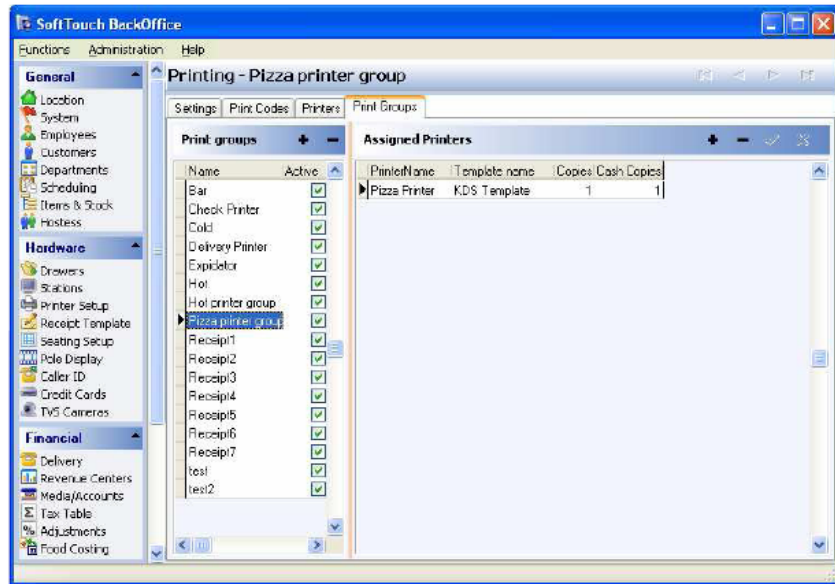
- i. Create a kitchen printer for each kitchen station (click on “+Add” button).
For example, Hot printer, Pizza printer
- ii. Assign kitchen printers to each Windows TCP/IP printer.
For example, assign the “Hot printer” to WKDS1, “Pizza printer” to WKDS2. Make sure that only kitchen order printers are assigned to WKDSx printer names.
- iii. In the “Print Code” box, select the previously created “KDS Print Code”.
- iv. Uncheck “Route Locally (local default printer)” and “Paper Cut” options.
- v. Check “Active” option.
- vi. Click “Save” or checkmark to save the settings.
- vii. Repeat for each kitchen printer.



e. Set up printer groups in SoftTouch

Within the SoftTouch BackOffice, click “Printer Setup” on the left pane and on the right pane click “Printer Groups” tab.

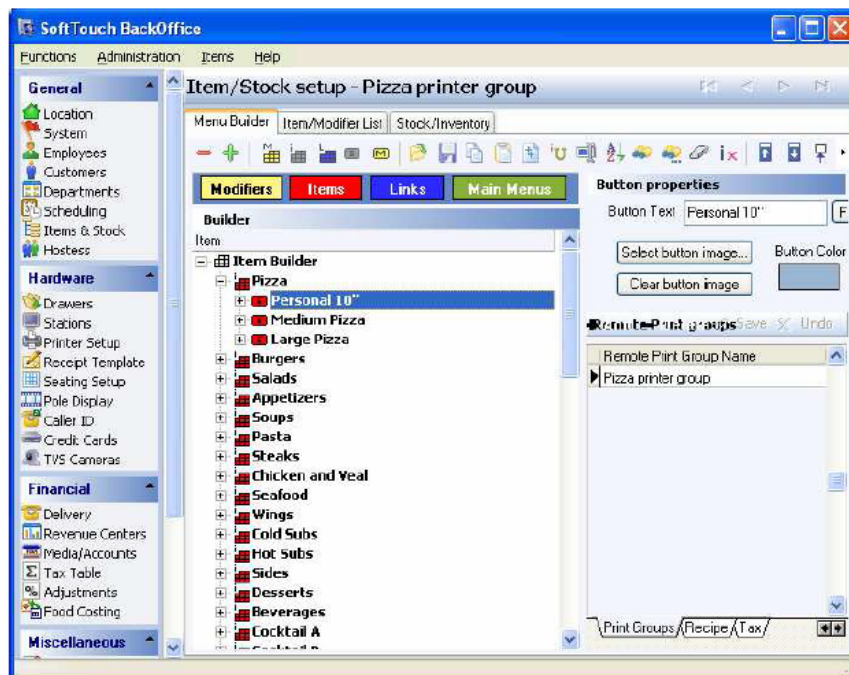
- i. Create a print group for each kitchen printer.
For example, Hot printer group, Pizza printer group
- ii. Assign a kitchen printer and KDS template to each print group.
For example, assign “Hot printer” to Hot printer group, assign “Pizza printer” to Pizza printer group



4. Assign printer groups to items in SoftTouch

- i. Within the SoftTouch BackOffice click “Items&Stock” on the left pane.
- ii. On the right pane, select the “Menu Builder” tab and click the red “Items” button. Next click on the “+” sign to expand the item tree below and show the item details.
- iii. Select the Print Groups tab at the bottom of the right pane and assign a print group to each item. For example, assign Pizza printer group to Pizza -> Personal 10”.

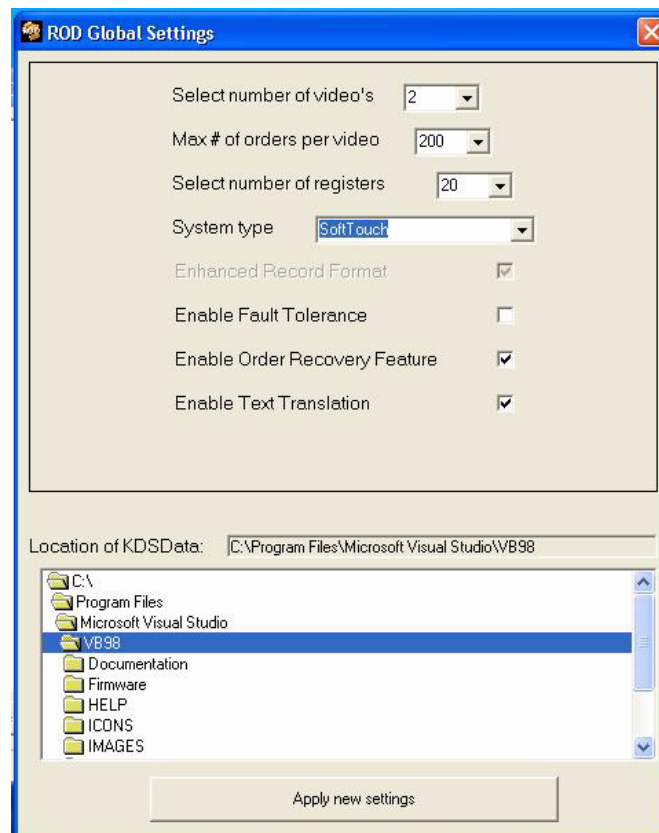
These steps will need to be repeated for each item that will be displayed/routed to a remote kitchen screen.



5. Configuring and loading the ROD Gold software

Once everything is setup within Windows and the SoftTouch system you will be ready to configure the ROD Gold software. When you first installed the ROD Gold software it placed some new entries on your Start Menu under the name "Select Electronics Corporation". There you will find entries for ROD Gold Maintenance, ROD Gold, Register Emulator, etc. You can optionally place a shortcut to these on your desktop or place them in your Startup folder.

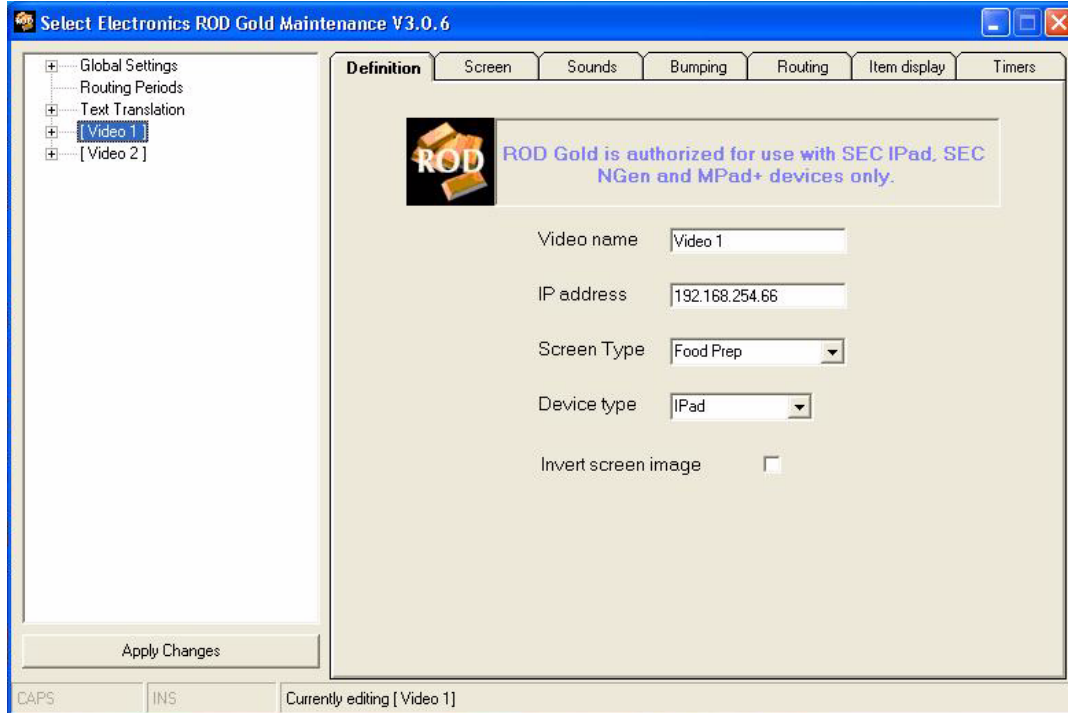
Prior to running the ROD Gold some minimal configuration must be done. This is done via the ROD Gold Maintenance. Upon first load of the ROD Gold Maintenance you will need to go into "Global Settings" to configure your system parameters. This is done by clicking on the text "Global Settings" in the upper left window. Clicking the "+" will simply expand the tree view.



After you have made the required changes you must click the "Apply changes" button to close the window. Clicking the "X" to close the window will not save the changes made.

You will now notice there are new entries for each video that you added. You will need to do minimum configuration on each of these videos. Simply click the [VIDEO n] field in the upper left window and the tabs to the right will open up allowing you to set the options for each video. You are required to enter an IP address for each video. You can make all of the other changes you need while in

the video setup screens but the only entry that is absolutely required is the IP address field.



Once you are done making changes to the video, and prior to moving onto the next video to make changes, you will have to click the “Apply changes” button in the lower left corner. If this is not done your changes will not be save.

Once you are done doing all of the maintenance required you can close the maintenance window at which point you will be asked to save your changes permanently to disk.

At this point you are ready to load the ROD Gold !!!!

Complete and up-to-date documentation for the ROD Gold and ROD Gold Maintenance is provided by way of Online Help. Depressing the F1 key at any point within our software will allow you to access our documentation.